

A
s
t
o
u
n
d
i
n
g



TALES



FROM

MACAVITY

"THE RELATIVITY OF ABSOLUTES"

EYES THAT CUT THROUGH THE
SMOKE AND IGNORE THE
MIRRORS, A MIND THAT NEVER
SLEEPS

THE INCREDIBLE STORY OF A
GINGER CAT CONFRONTING
ALTERNATIVE FACTS AND
SURVIVING TO LIVE IN REALITY
AGAIN

Love

Compassion

Empathy

Not far away, in the not too distant past, in a kitchen in an undisclosed location, Mot, the Precocious Puffin, watches as Macavity carefully mixes the ingredients for his famous pawprint bread. . .

Why do I keep having these thoughts about the relativity of absolutes?

UMMMM!

Macavity, do you remember in the Gospels where Pilate asks Jesus, "What is truth?" Why do you think Jesus didn't answer him?

I suspect Jesus realized that truth is rarely self-evident.

What is truth then?

Retiring to his meditation chamber, Macavity carefulliy ponders Mot's question.

OK, let's think about four seemingly related statements:

All humans are created equal.

God created humankind.

A Truth arises and is validated in a situation, a context, and will be validated in that context.

I think, therefore I am.

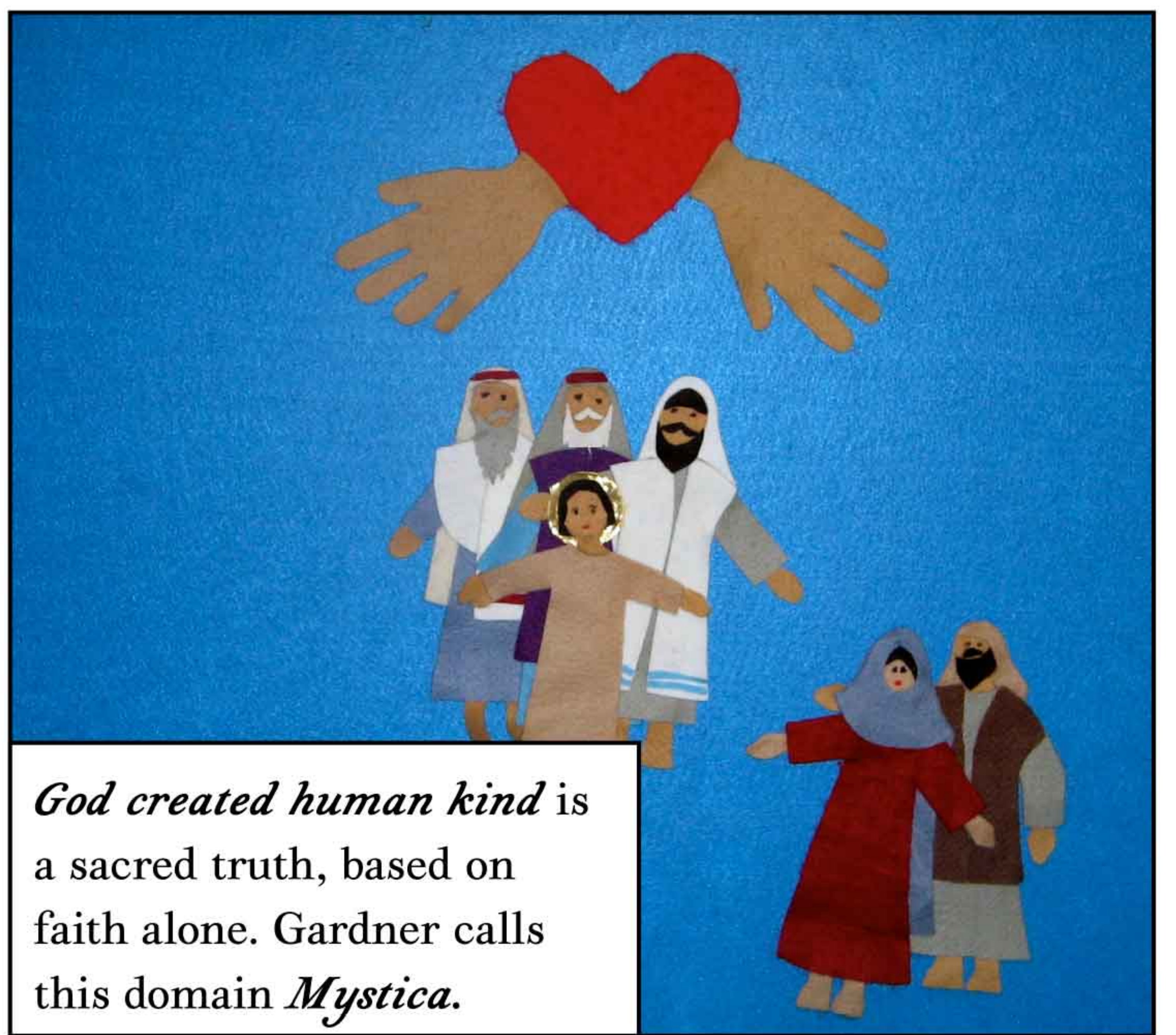
Human beings evolved from an earlier species.

Unlike Jesus, a truth usually garners little respect outside of its home domain.

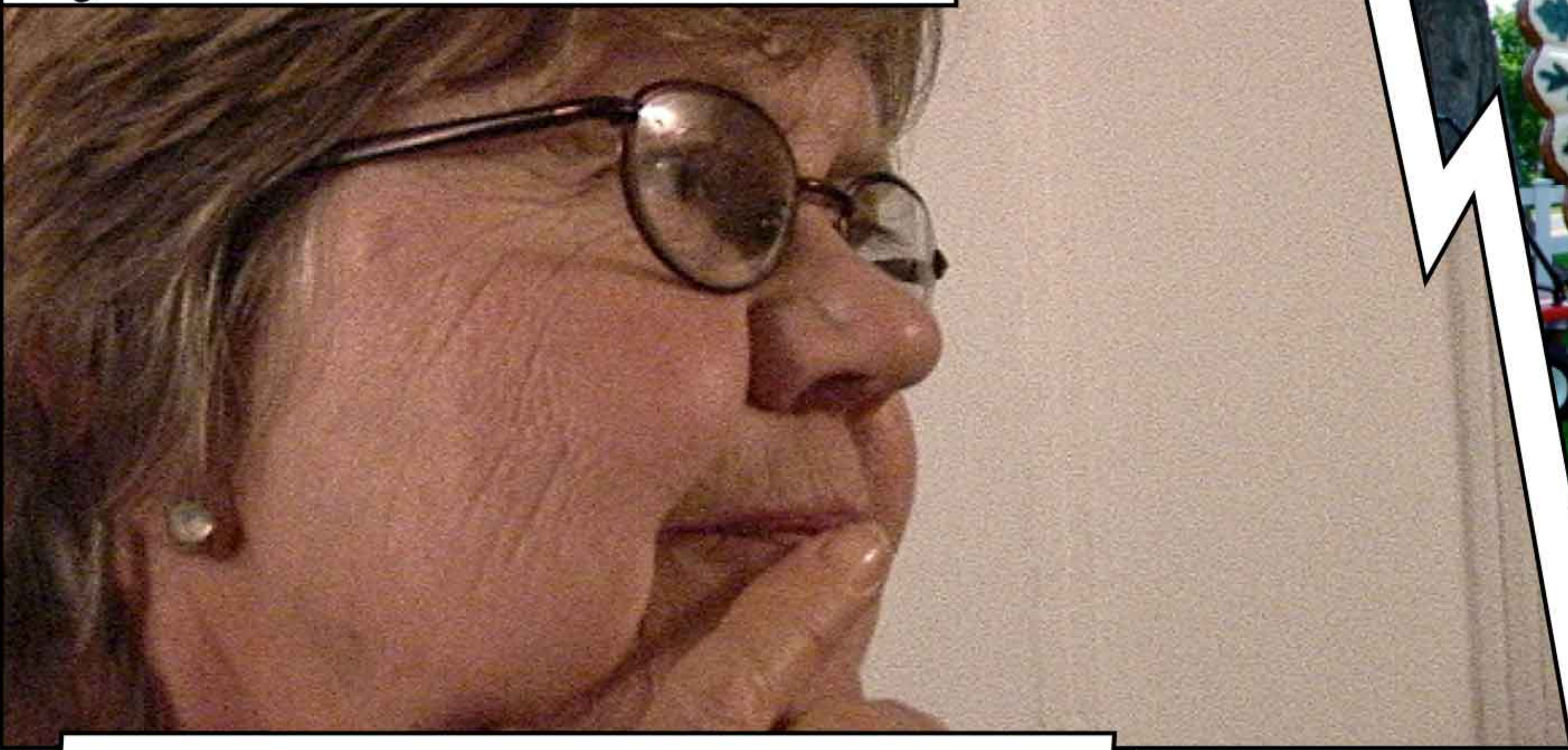
All humans are created equal is an assertion, an opinion whose veracity is explored via debate and persuasion. William Gardner calls the domain of this truth *Rhetorica*.



God created human kind is a sacred truth, based on faith alone. Gardner calls this domain *Mystica*.



I think, therefore I am is an assertion derived from reason and logic. Gardner labels this domain *Logica*.



Human beings evolved from earlier species is derived from rigorous, carefully documented research. Gardner calls this domain *Empirica*.

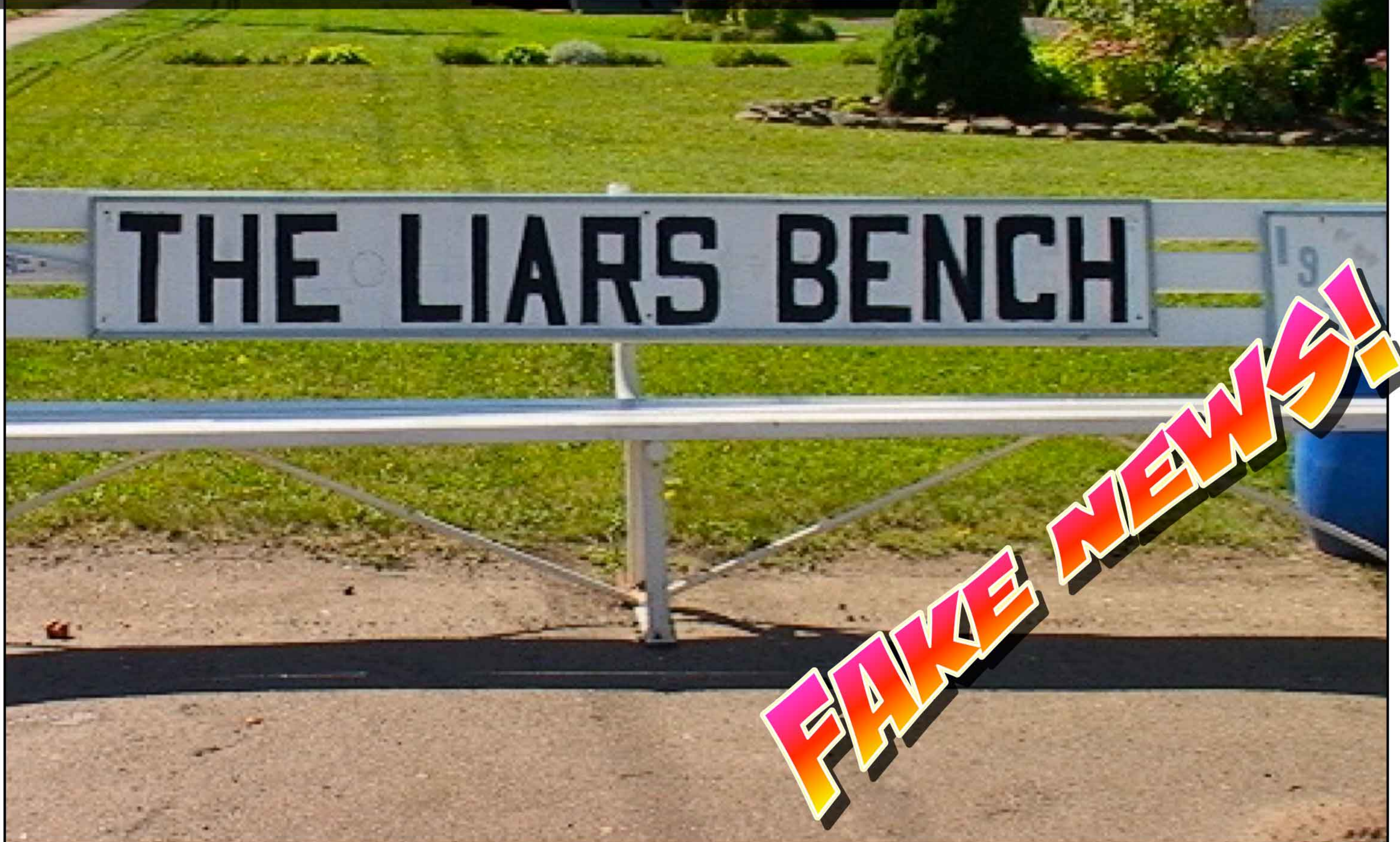
You might think of these domains as ranges of context. Each domain has its own formal or informal rubrics for deriving what is true. What is true in one domain is seldom true in another.



But some statements don't fit in to any domain of truth - they are what we call false.

If a statement is unintentionally false the statement is simply untrue.

If a statement is intentionally false, meant to deceive, it is a lie.



How does each domain treat Professor David Hakken's assertion?

There are only four types of sandwiches that it is possible to make.

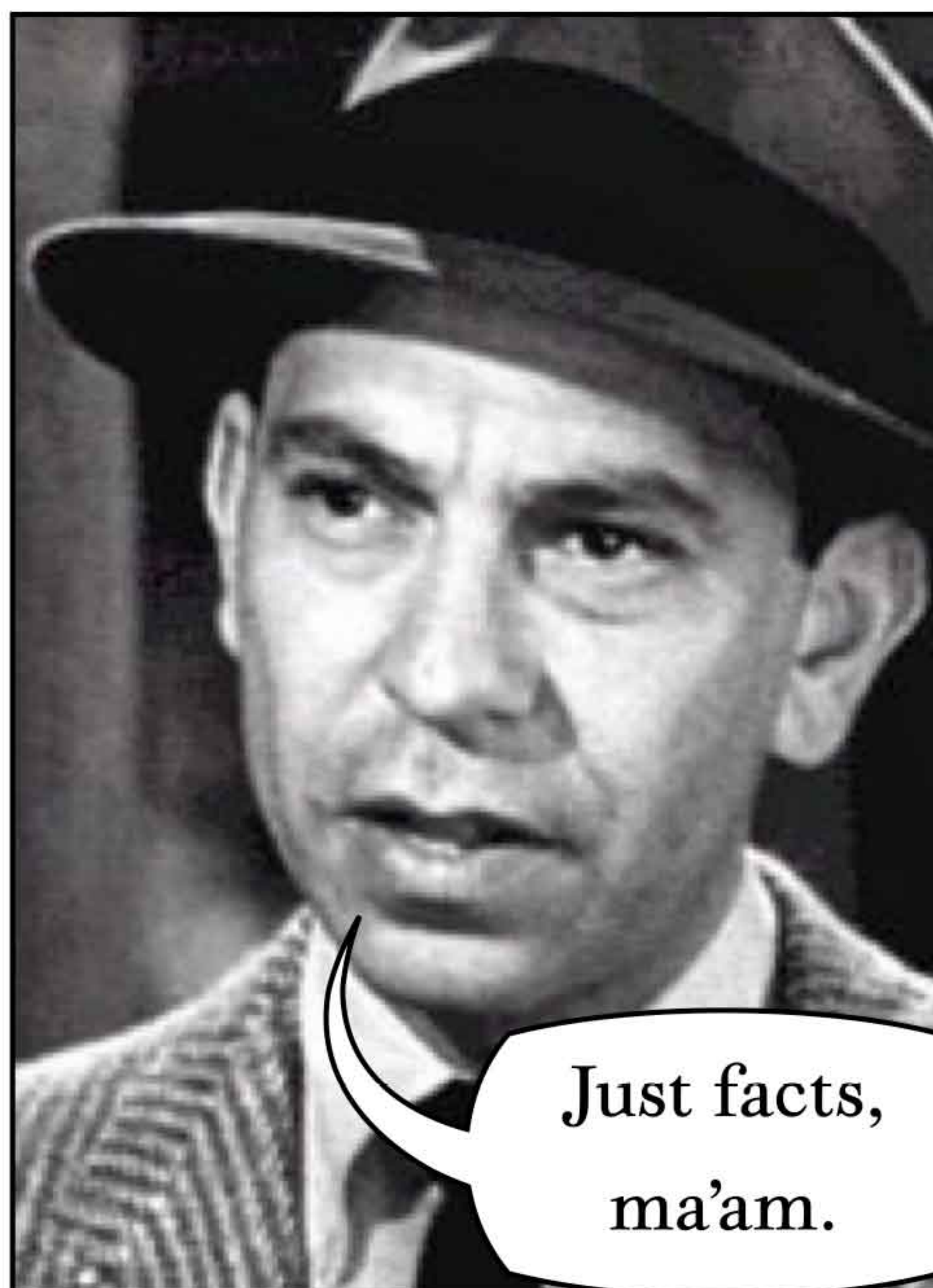
This is a white

Sandwich opt

1. tuna
2. ham
3. beef
4. veggie



Yadda, Yadda,
Yadda, Bowling
Green Massacre.



Just facts,
ma'am.



In your
heart you know
he's right.

